



# NCSH

Nordic Center for  
Sustainable Healthcare



Member offer 2018

JOIN NORTHERN EUROPE'S LEADING NETWORK FOR STAKEHOLDERS IN

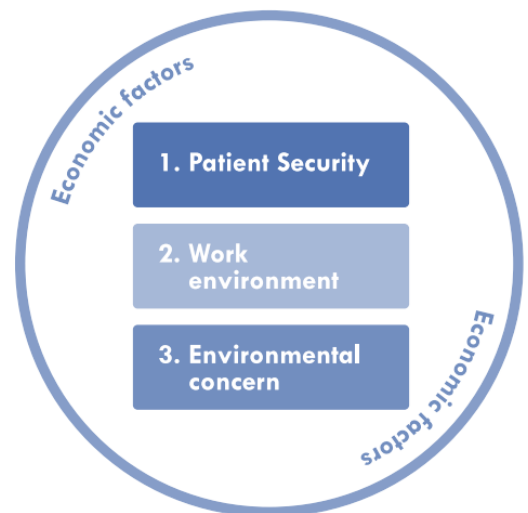
## HEALTHCARE & SUSTAINABILITY

Nordic Center for Sustainable Healthcare is an intersectional arena for stakeholders, organizations and projects in the field of sustainable healthcare.

*Our vision is to become a global leader in sustainable healthcare together with our members and partners.*

Behind the Nordic Center for Sustainable Healthcare is a strong network of national and international stakeholders from the sustainable healthcare sector. This well-established network creates value and growth opportunities for our partners and members.

NCSH was founded in 2015 and is growing rapidly.



CONTACT US FOR MORE INFORMATION:

info@sustainablehealthcare.se +46 (0)40-606 55 80

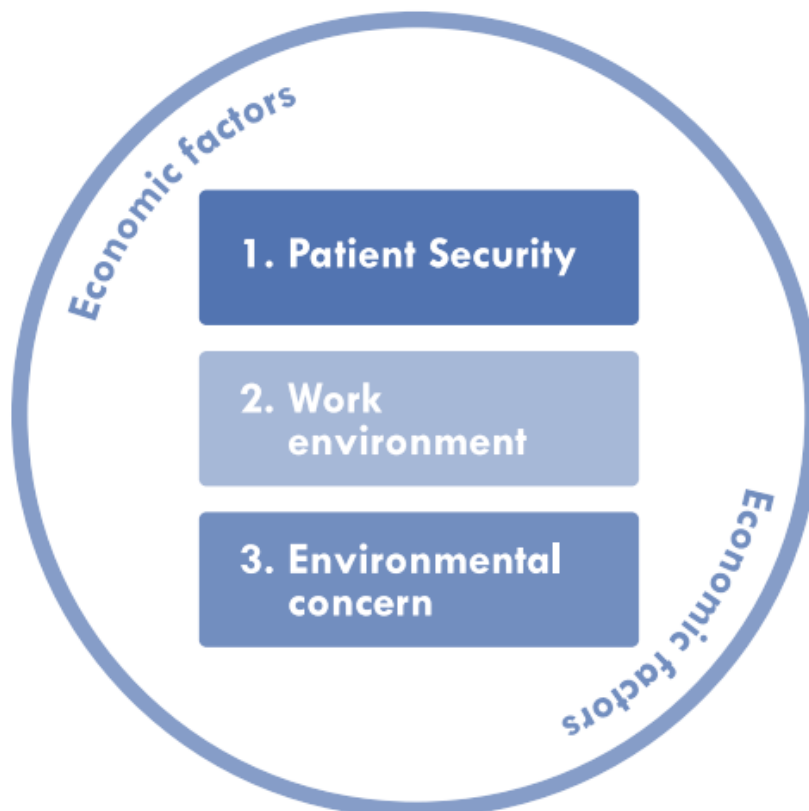
[www.nordicshc.org](http://www.nordicshc.org)

# What is sustainability in the healthcare sector?

Sustainable healthcare is a broad area that includes many sectors and business categories. Some examples of the sustainability challenges in healthcare we want to address:

- Energy efficiency in healthcare- and hospital buildings
- Green building design and construction of healthcare buildings
- Transportation and logistics
- Climate impact from healthcare operations
- Sustainable supply chain
- Reduction of dangerous chemicals
- Improved sustainability performance from Med Tech and Life Science products and solutions
- Waste water treatment and water management
- Pharmaceuticals in the environment
- Waste management and waste reduction

Unlike other industries, in healthcare patient concern is always central. This means that sustainable solutions for healthcare must be unique and designed to focus on patients and staff.



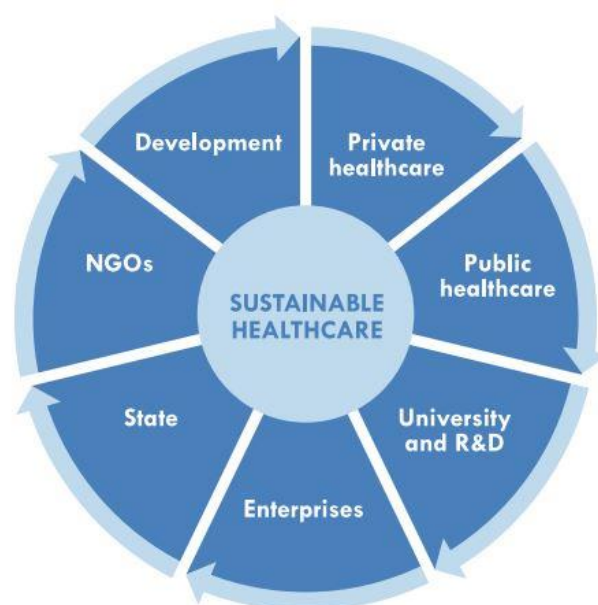
# Why should organizations take part in the Nordic Center for Sustainable Healthcare?

The Nordic Center for Sustainable Healthcare (NCSH) is an intersectional arena for stakeholders, organizations and projects in the field of sustainable healthcare.

The purpose of the Center is to provide a platform for cooperation in the areas of environment and sustainability in healthcare. The number of members in the NCSH is growing rapidly following the high demand for such a platform in the Nordic healthcare sector.

Some of the activities in the NCSH, most of them exclusive for members:

- Innovative project with groups of members.
- International collaboration and international contacts and collaboration opportunities.
- Local meeting points where healthcare professionals can meet with suppliers and researchers.
- International conferences in Nordic cities.
- Marketing and best-practice within healthcare and sustainability.
- Matchmaking and knowledge sharing.
- Trainings, workshops and site visits based on member interests.



# CUSTOMIZED OFFER TO DIFFERENT ORGANIZATIONS

Our ambition is to make participation in the NCSH possible for all parties involved in the area. Hospitals, businesses, regional authorities, county councils as well as a wide range of other organizations from the healthcare sector are key parties in the process of building up the Center. In order to achieve this wide reach, we provide organizations with different options for participation in the Center, see the information below.

## STRATEGIC PARTNER

As a strategic partner, your organization participates in setting the agenda for the NCSH. You gain access to the NCSH knowledge- and contact bank. The logotype of the organization is placed on the front page of [sustainablehealthcare.se](http://sustainablehealthcare.se). Strategic partners can participate in the steering group and thereby have influence over the NCSH's activities.

- Fee: Individual fee according to agreement.

## MEMBERSHIP - CATEGORIES AND RATES\*

A membership in the Center grants your organization an access to the NCSH knowledge- and contact bank. The NCSH also provides an opportunity to work with other relevant parties, define projects, identify research areas, and use this information platform to spread knowledge about sustainable product and service innovations. Members get access to workshops, discounts on conference fees, exclusive offers for exhibition and sponsorship at NCSH conferences and much more.

All membership fees are listed without VAT.

### COUNTY COUNCILS, REGIONS, UNIVERSITIES, NATIONAL AGENCIES OR SIMILAR ORGANIZATIONS

- 35 000 SEK/year or individual fee according to agreement.

### LARGER SECTOR ORGANIZATIONS, CLUSTERS OR SIMILAR ORGANIZATIONS

- 35 000 SEK/year or individual fee according to agreement.

### SMALLER SECTOR ORGANIZATIONS, CLUSTERS OR SIMILAR ORGANIZATIONS

- 25 000 SEK/year or individual fee according to agreement.

## COMPANIES OR SIMILAR ORGANIZATIONS

A membership enables collaboration with, and exposure to healthcare customers. It also provides visibility at export events, which in turn can attract new customers and partnerships.

- 1-9 employees: 3 900 SEK/year
- 10-49 employees: 6 400 SEK/year
- 50-249 employees: 10 400 SEK/year
- 250-999 employees: 25 000 SEK/year
- 1 000 or more employees: 35 000 SEK/year

|                       |                                |                                |                             |   |                                     |  |  |
|-----------------------|--------------------------------|--------------------------------|-----------------------------|---|-------------------------------------|--|--|
| Sustainable hospitals | Good environmental performance | Good environmental performance | Applications for healthcare | Good sustainability performance and applications for healthcare | Smart locally produced organic food | Support/boost sustainability performance | Management system, reporting, training |
| Construction Industry | Life Science                   | Med Tech                       | Clean Tech                  | "Regular" Companies   | Food Industry                       | ICT                                      | Management                             |

## HEALTHCARE AND CARE ORGANIZATIONS

- Individual hospitals, primary care centers, elderly care, nursing homes etc. are welcome as members at no charge.

## PROJECT ORGANIZATIONS WITH OWN FUNDING, EU-PROJECTS, RESEARCH PROJECs ETC.

- Annual turnover up to SEK 2 million: 5 000 SEK/year
- Annual turnover from SEK 2 million: 10 000 SEK/year or individual fee according to agreement.

## INTERNATIONAL PARTNERS, NGO:s OR SIMILAR ORGANIZATIONS

- Individual fee according to individual agreements.

## DISCOUNTS

- Members in Swecare and Medeon has 20 % discount on member fees.

*\* Members sign up for the network by contacting NCSH and paying the membership fee sent by invoice. The membership fee can be raised annually due to inflation. Membership is valid for 1 year at a time and renewed by paying the annual membership fee.*



# NCSH

Nordic Center for  
Sustainable Healthcare

## CONTACT US:

Our office is located in Malmö, but the NCSH spans over North Europe and Scandinavia.

Contact us if you want to learn more about the NCSH:

NORDIC CENTER FOR SUSTAINABLE HEALTHCARE  
C/O TEM

Altonagatan 3B

211 38 Malmö

SWEDEN

Tel: +46 (0)40-606 55 80

Web: [www.nordicshc.org](http://www.nordicshc.org)

Mail: [tem@tem.se](mailto:tem@tem.se)